

Kinewall
by Kinedo



DECORATIVE BATHROOM WALL PANELS



WHY JUST INSTALL A
SHOWER
 WHEN YOU CAN
TRANSFORM

YOUR SHOWER SPACE OR YOUR WHOLE
 BATHROOM WITH KINEWALL

Kinewall bathroom wall panels from Kinedo offer you a fantastic alternative to tiles.

Whether you are adding a shower or renovating your whole bathroom **Kinewall** is easy to install, and with over 70 designs to choose from you can create the perfect bathroom whatever your style.

MORE
 THAN
70
 DESIGNS



Designs chosen Blue Cladding + Blue Terrazzo and Blue Terrazzo

AN **INNOVATIVE**
 SOLUTION



More than
70 designs



10 Year
 Warranty



Ease of
 installation



Minimal preparation
 needed



Easy maintenance



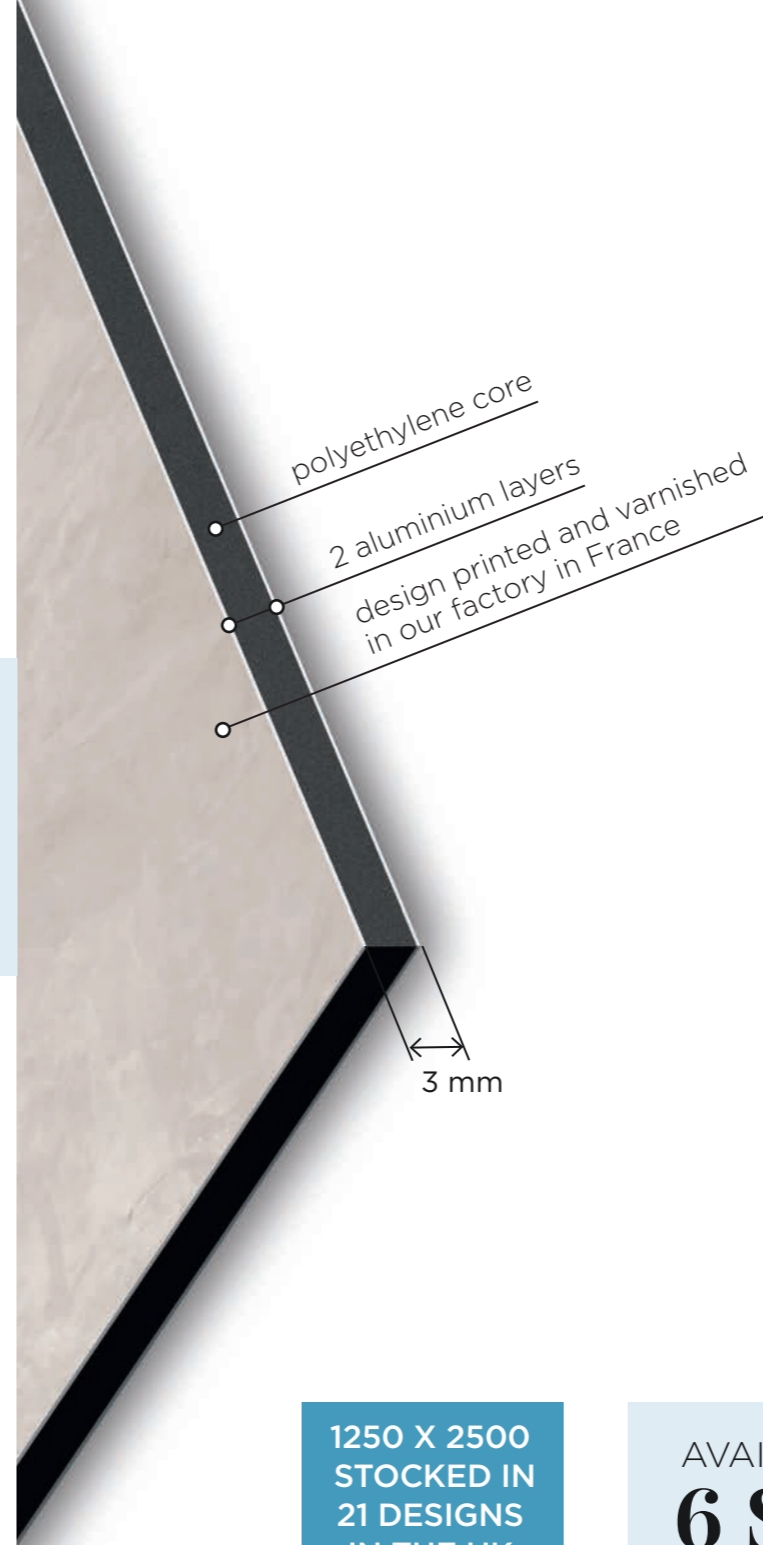
100% waterproof



Lightweight
 & durable

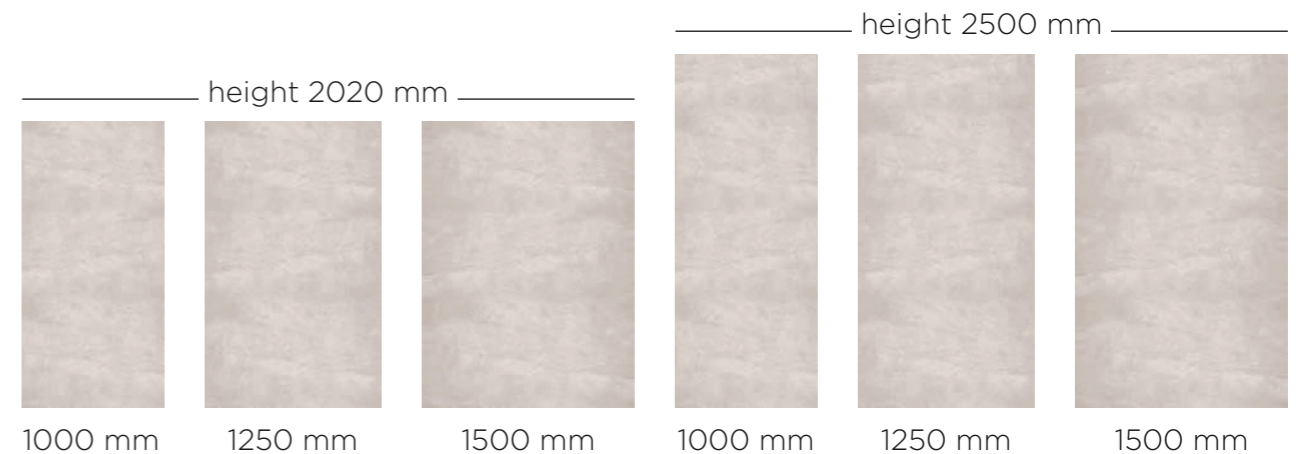


Easy to cut

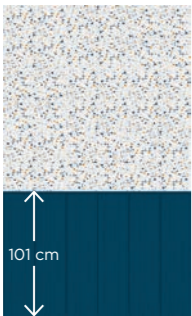


1250 X 2500
 STOCKED IN
 21 DESIGNS
 IN THE UK

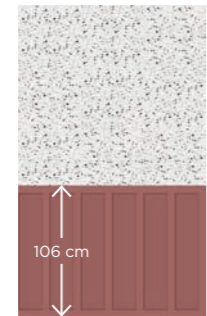
AVAILABLE IN
6 SIZES



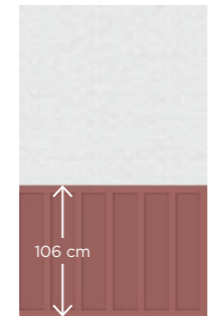
MORE THAN
70
DESIGNS



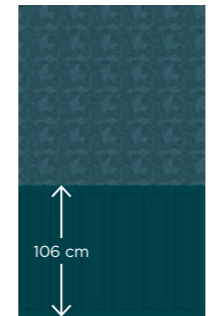
Blue Cladding + Blue Terrazzo p.9



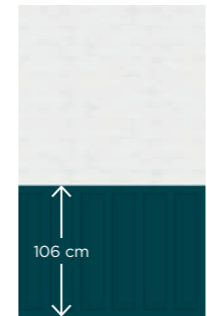
Mixed Terracotta + Terracotta Terrazzo p.8



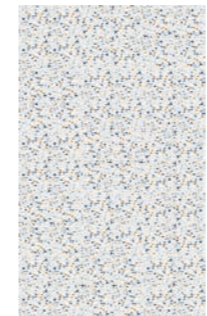
Mixed Terracotta + White Scalloped Edge p.9



Mixed Midnight Blue + Exotica Blue p.7



Mixed Midnight Blue + White Coating p.9



Blue Terrazzo p.9



Terracotta Terrazzo p.8



Pink Marble Pencils p.12



Walnut Pencils p.32



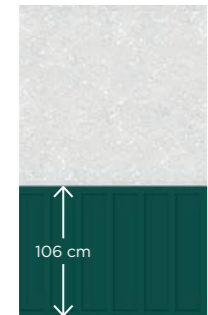
Blue Monochrome Hexagon p.25



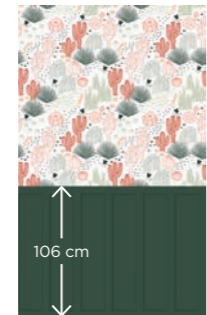
Grey Monochrome Hexagon p.25



Mixed Midnight Blue + Grey Terrazzo p.8



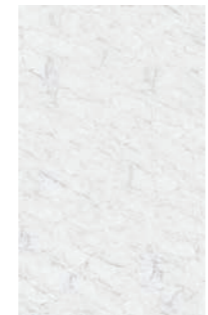
Mixed Green + Grey Terrazzo p.8



Mixed Green + Cactus p.9



Alabaster p.11



White Marble p.12



Pink Marble p.12



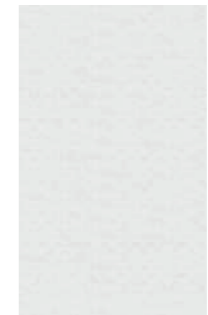
Hexagon Trilogy p.25



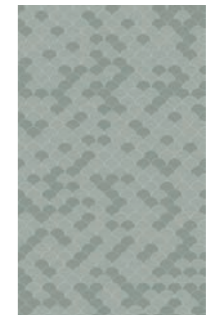
Black Marble Tile p.11



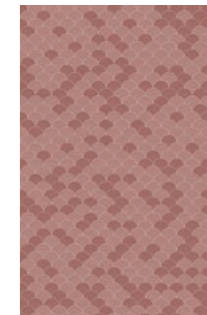
Beige Scalloped Edge p.23



White Scalloped Edge p.24



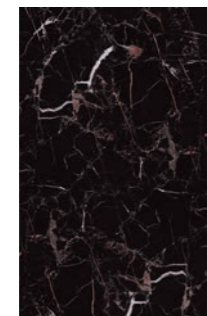
Sage Scalloped Edge p.24



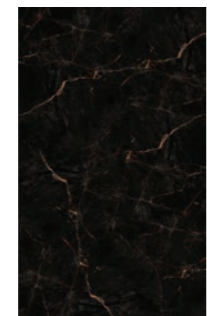
Terracotta Scalloped Edge p.24



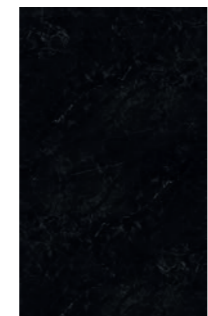
Blue Grey Marble p.13



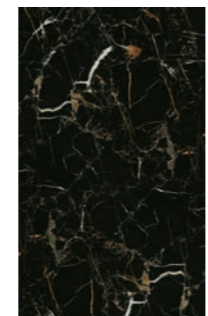
Black Marble with White & Copper p.12



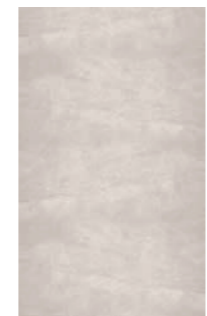
Black Marble with Copper p.12



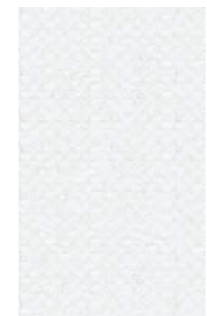
Black Marble p.12



Black Marble with White & Gold p.13



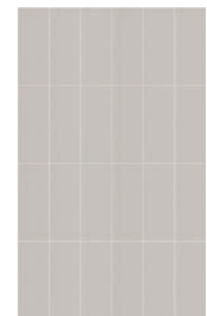
Moroccan Beige p.15



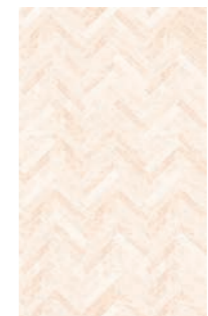
Marble Scalloped Edge p.13



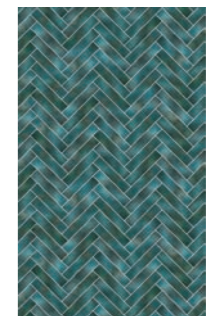
Metro p.25



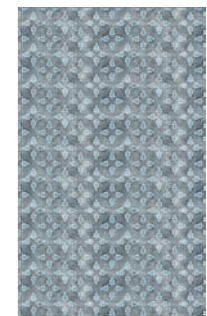
Earthenware Fabric p.24



Herringbone p.27



Green Blue Herringbone p.25



Vintage Blue Grey p.26



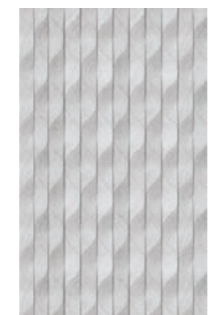
Cement Strips p.32



Cement Circles p.14



Cement Grey Tiles p.14



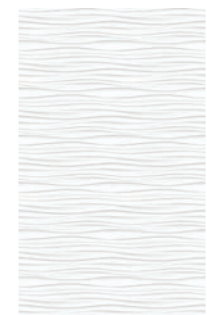
Grey Geometric Wave p.15



Dark Concrete p.15



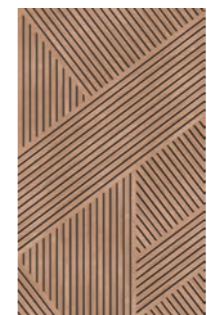
Corten Steel p.15



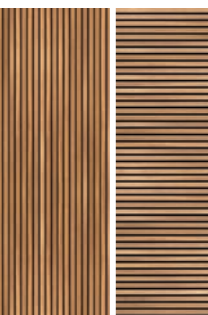
White Waves p.27



Natural Oak p.14



Graphic Wood Design p.32



Vertical Wood Horizontal Wood Design p.19 Design p.30



Walnut p.31



White Cladding p.30



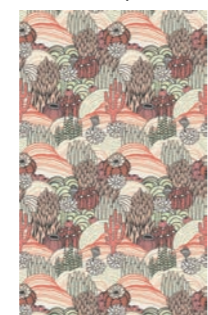
White Brushed Stainless Steel p.15



Grey Brushed Stainless Steel p.15



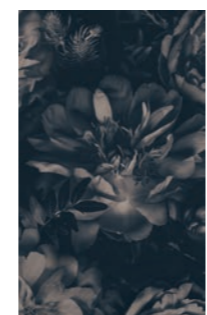
White Trowel p.15



Cactus p.20



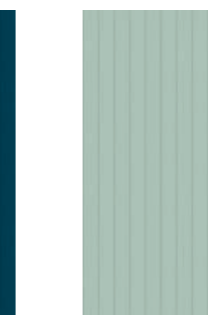
Desert Cactus p.19



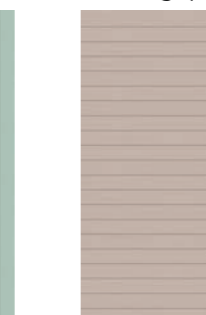
Palm Trees p.21



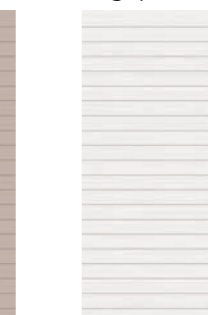
Floral p.18



Midnight Blue Vertical Panelling p.33



Celadon Green Vertical Panelling p.33



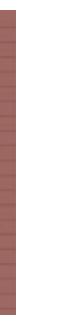
Beige Horizontal Panelling p.29



White Horizontal Panelling p.31



Midnight Blue Horizontal Panelling p.31



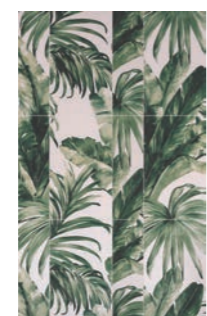
Terracotta Horizontal Panelling p.20



Banana Trees p.17



Banana Trees Black & White p.18



Jungle p.20



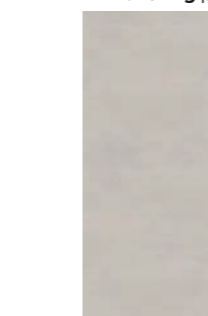
Exotica Blue p.21



Exotica Green p.19



Grey Terrazzo p.8



Beige Coating p.19



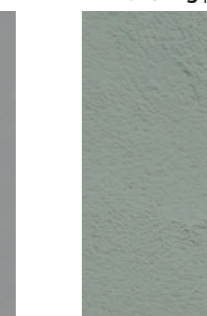
White Coating p.19



Anthracite Grey Coating p.26



Stone Grey Coating p.15



Sage Coating p.20



Terracotta Coating p.23

MIXED

DESIGNS

With such a range of styles, colours and patterns to choose from you can have one design for your whole bathroom or choose a design for just your shower area or around a bath or basin. Why not mix and match patterns to create that perfect designer look. Our mixed panelling range of Kinewall designs are perfect to create this look.



Designs chosen Mixed Midnight Blue
+ Exotica Blue with Exotica Blue



Designs chosen Mixed Terracotta + Terracotta Terrazzo with Terracotta Terrazzo



Designs chosen Mixed Green + Cactus with Sage Coating



Design chosen Mixed Green + Grey Terrazzo



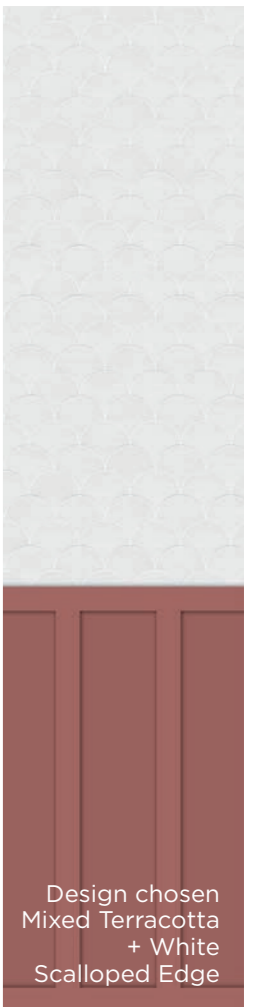
Designs chosen Mixed Midnight Blue + Grey Terrazzo with Grey Terrazzo



Design chosen Mixed Midnight Blue + White Coating



Designs chosen Blue Cladding + Blue Terrazzo with Blue Terrazzo



Design chosen Mixed Terracotta + White Scalloped Edge

GET THE INDUSTRIAL LOOK WITH
MINERALS & METALS

Create the perfect New York loft look by mixing raw materials such as concrete and cement with mineral or metallic elements. Add in the elegance of marble and a touch of gold or copper to the white, black and grey colour pallet and you can create this look. You can also add your own elements such as a splash of colour to this trend to create a bespoke designer loft look.



Designs chosen Black Marble with Alabaster



Design chosen
Pink Marble Pencils



Designs chosen Black
Marble with Pink Marble



Design chosen Blue Grey Marble



Designs chosen White Marble
with Black Marble with Copper



Design chosen Black
Marble with White & Gold



Design chosen Marble
Scalloped Edge



Design chosen
Cement Strips



Designs chosen Grey
Geometric Wave with
Stone Grey Coating



Design chosen
Moroccan Beige



Design chosen
Cement Grey Tiles



Designs chosen Cement
Circles with Natural Oak



Design chosen Dark Concrete



Design chosen
Corten Steel



Design chosen Grey
Brushed Stainless Steel

NATURE

Bringing the outdoors in creates a relaxing mood, but adding a bold print can make your bathroom feel like a spa experience every day!

Mixing bold pattern with natural woods and the natural colour palette you can create the perfect calming space or a bold exotic room depending on your taste.



Designs chosen Banana Trees with Walnut



Design chosen Floral



Designs chosen Desert Cactus with Beige Coating



Designs chosen Banana Trees Black & White with Terracotta Coating



Designs chosen Exotica Green with Vertical Wood Design



Designs chosen Cactus with Terracotta Horizontal Panelling



Designs chosen Grey Terrazzo with Palm Trees



Designs chosen Jungle with Sage Coating



Designs chosen Exotica Blue with White Horizontal Panelling

PATTERNS & GEOMETRIC

The latest trends in patterns and geometric designs are available on our wall panels. Tiles, scalloped edge, hexagon, herringbone or even cement tiles, you can choose the design that suits your taste and personality.

With different colours and bold patterns you can create a big impact in a small space or you can mix and match to create the perfect look for you.



Designs chosen Beige Scalloped Edge with Terracotta Coating



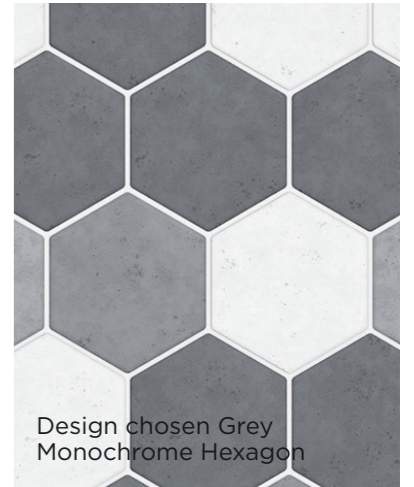
Design chosen Earthenware Fabric



Design chosen Hexagon Trilogy



Design chosen Blue Monochrome Hexagon



Design chosen Grey Monochrome Hexagon



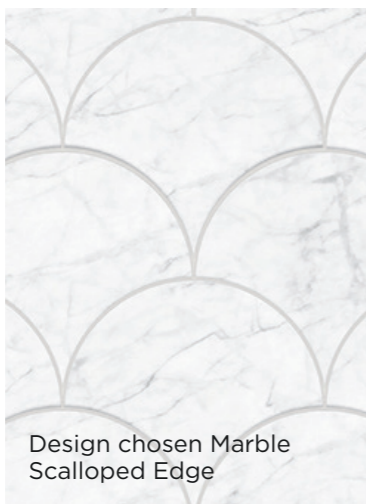
Design chosen White Scalloped Edge



Design chosen Terracotta Scalloped Edge



Design chosen Beige Scalloped Edge



Design chosen Marble Scalloped Edge



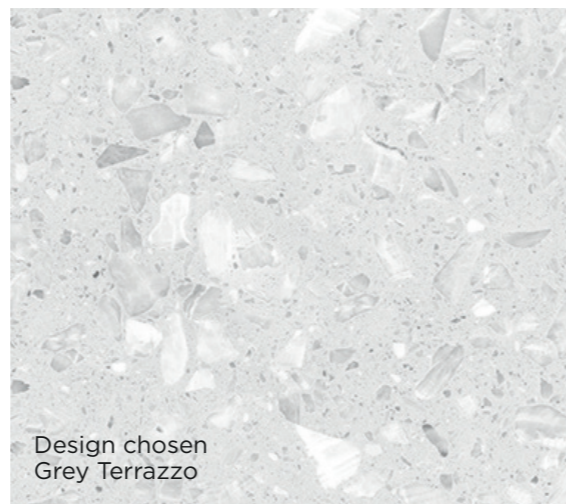
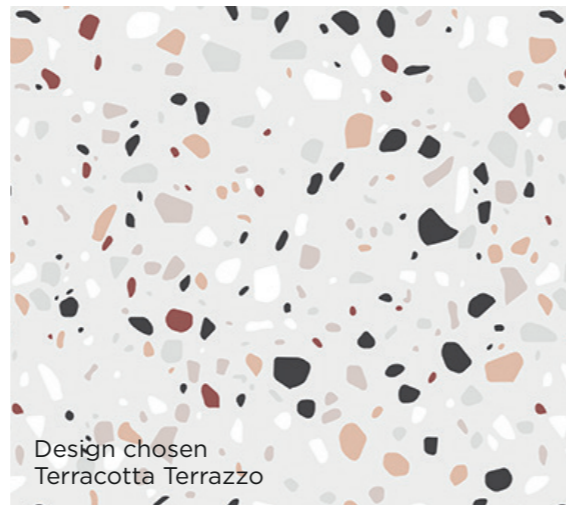
Design chosen Sage Scalloped Edge



Design chosen Metro



Designs chosen Green Blue Herringbone with Corten Steel



WOOD

Whether you want to create the perfect Scandinavian look, a gorgeous seaside chalet or a quintessential English cottage, wood can help you to create the perfect look.

From classic wooden strips to modern graphic wood design or simple panelling, Kinewall has a variety of designs to choose from to help you create the theme you want in your bathroom.



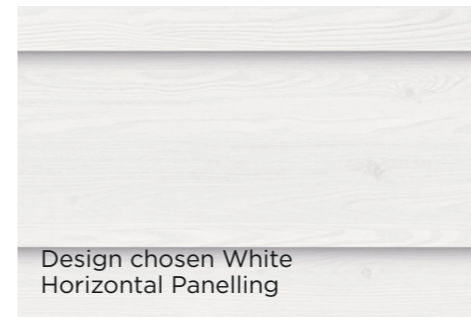
Design chosen Beige Horizontal Panelling



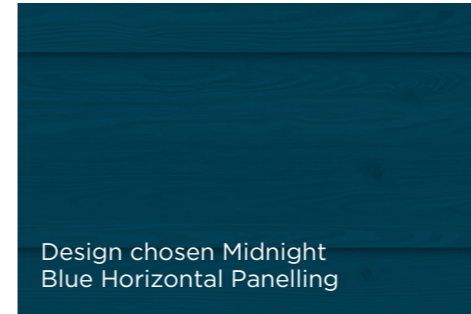
Design chosen
Vertical Wood Design



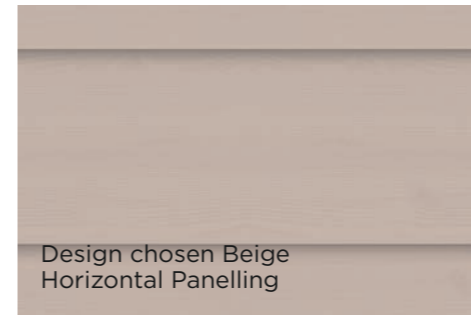
Design chosen
Horizontal Wood Design



Design chosen White
Horizontal Panelling



Design chosen Midnight
Blue Horizontal Panelling



Design chosen Beige
Horizontal Panelling



Design chosen Terracotta
Horizontal Panelling



Design chosen White Cladding



Design chosen Walnut



Design chosen Walnut Pencils



Design chosen Celadon Green Vertical Panelling



Designs chosen Graphic Wood Design with Cement Strips



Designs chosen Midnight Blue Vertical Panelling with Blue Terrazzo

YOUR CHOICE OF INSTALLATION

With profiles

Profiles available in 3 colours - White, Chrome, Black:   



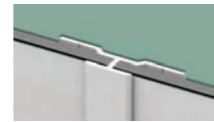
- Inside corner profile - L shaped



- Outside corner profile - L shaped

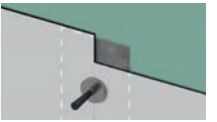


- U shaped profile for panel ends



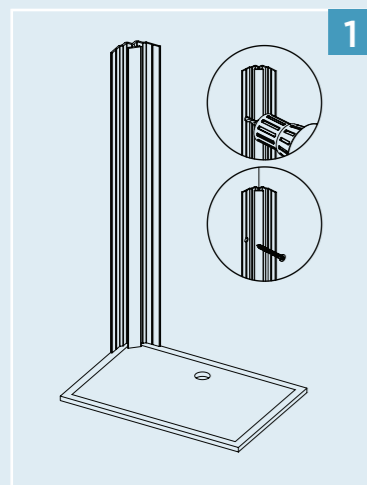
- H shaped profile for mounting 2 panels together

Without profiles

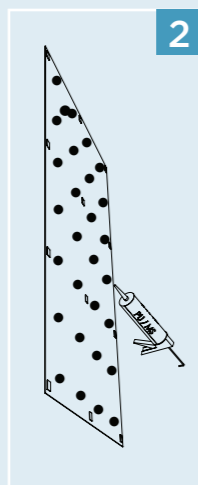


- Metal strip for mounting 2 panels together without profile

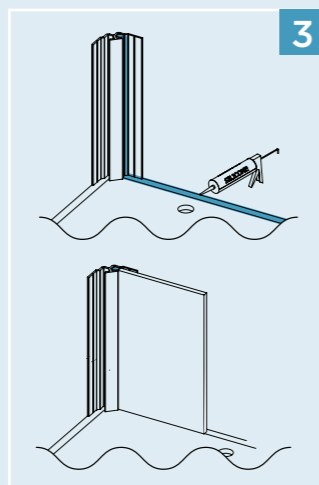
- Kit (magnet) for use with metal strip



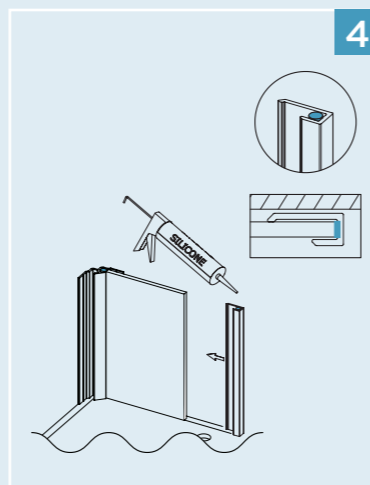
1



2



3



4

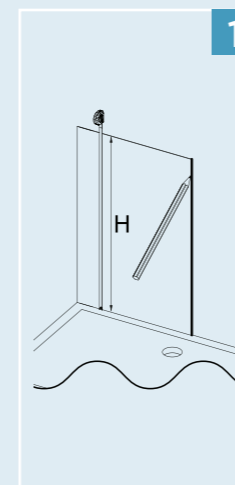
1 Screw the corner profile to the wall

2 Put the adhesive on the back of the panel then attach the PU or MS polymer glue pads

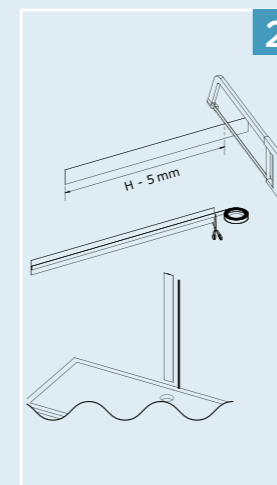
3 Silicone the inside of the corner profile as well as the edge of the tray then insert the panel which has already been cut or drilled to size as needed

4 Silicone the end profile then slide it onto the panel

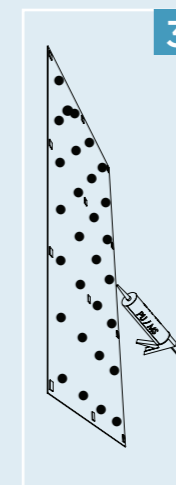
Repeat steps 2 - 3 and 4 for the second side then finish with an end profile on the final panel



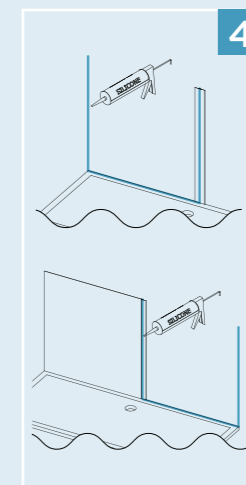
1



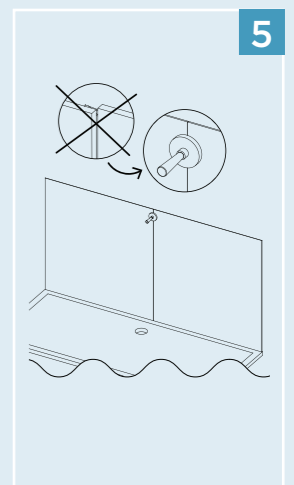
2



3



4



5

1 Present the panel, measure the total height and make a mark at the right end of the panel

2 Cut the metal strip, subtracting 5 mm from the measurement made above. Position the adhesive on the back and stick the strip to the wall

3 Put the adhesive on the back of the panel then attach the PU or MS polymer glue pads

4 Silicone the corner of the wall, the middle of the metal strip as well as the edge of the tray then insert the panel which has already been cut or drilled as needed. Repeat for the second panel

5 Use the magnet to help align the panels perfectly

Profile can be used on the final panel to finish the look

Kinewall by Kinedo

kinedo.co.uk

Visit our website for more information on Kinewall and to see our range of shower trays, enclosures and cubicles.

SFA Saniflo UK Limited
Unit 1, Watford Interchange
Colonial Way
Watford
Herts WD24 4WP
United Kingdom

Tel 020 8842 0033
Web www.kinedo.co.uk



As our policy is one of continuous product improvement we reserve the right to alter product specification without notice. All information in this publication is given in good faith. No responsibility can be accepted for any errors, omissions or incorrect assumptions. January 2024 – Photo credits: INSPI, 3D Render. 11/23 BROCH-0050.