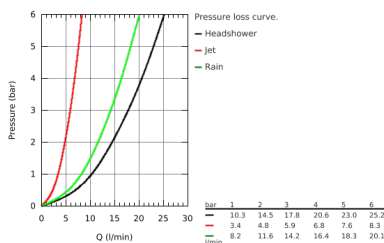
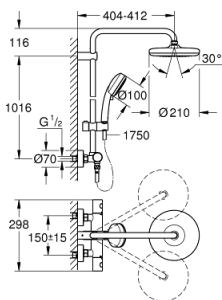


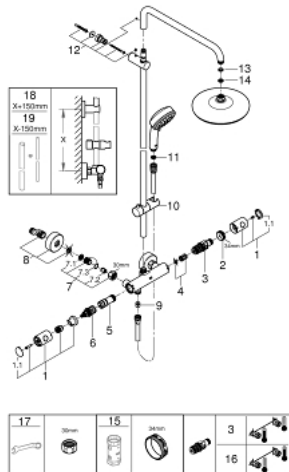
27 922 001 NEW TEMPESTA COSMOPOLITAN SYSTEM SHOWER SYSTEM WITH THERMOSTAT FOR WALL MOUNTING



PRODUCT DESCRIPTION

- Consisting of:
 - horizontal swivable 390 mm projection shower arm
 - **exposed thermostatic shower** with Aquadimmer function
 - allows change between:
 - head shower Tempesta 210 (26 408)
 - Rain spray pattern
 - with ball joint
 - rotation angle $\pm 15^\circ$
 - hand shower Tempesta Cosmopolitan 100 (27 571 001)
 - 2 spray patterns:
 - Rain, Jet
 - adjustable height via gliding element
 - Rotaflex shower hose 1750 mm 1/2" x 1/2" (28 410)
 - **GROHE TurboStat** compact cartridge with wax thermoelement
 - **GROHE SafeStop** safety button at 38°C (calibration required)
 - **GROHE SafeStop Plus** optional temperature limiter at 43°C included
 - **GROHE DreamSpray** perfect spray pattern
 - **GROHE StarLight** chrome finish
 - **SpeedClean** anti-limescale system
 - **Inner WaterGuide** for a longer life
 - **Twistfree** preventing the hose from twisting
 - suitable for instantaneous heaters from 18 kW/h
 - minimum flow rate 7 l/min.
 - **min. recommended pressure 1 bar**
 - optional upgrade: **GROHE EasyReach** tray (26 362)

27 922 001 NEW TEMPESTA COSMOPOLITAN SYSTEM SHOWER SYSTEM WITH THERMOSTAT FOR WALL MOUNTING



SPARE PARTS

- 1: Metal handle 1/2" (Order-nr. 47984000)
 - 2: Fitting ring (Order-nr. 47743000)
 - 3: Thermostatic compact cartridge 1/2" (Order-nr. 47439000)
 - 4: Buffer (Order-nr. 47398000)
 - 5: Water flow (Order-nr. 47751000)
 - 6: Aquadimmer (Order-nr. 12433000)
 - 7: Non-return valve (Order-nr. 47189000)
 - 8: S-union (Order-nr. 12662000)
 - 9: Non-return valve (Order-nr. 08565000)
 - 10: Glide element (Order-nr. 12140000)
 - 11: Dirt strainer (Order-nr. 0700200M)
 - 12: shower rail holder (Order-nr. 48423000)
 - 13: Fibre seal \varnothing 18,5 x \varnothing 12 x 2 (Order-nr. 0138900M)
 - 14: Dirt strainer (Order-nr. 48007000)
 - 15: Socket spanner (Order-nr. 19332000)*
 - 16: Thermostatic compact cartridge 1/2" for changed waterways (Order-nr. 47175000)*
 - 17: Special spanner (Order-nr. 19377000)*
 - 18: Shower system pipe for retrofitting (Order-nr. 48053000)*
 - 19: Shower system pipe for retrofitting (Order-nr. 48054000)*
- * Optional accessories