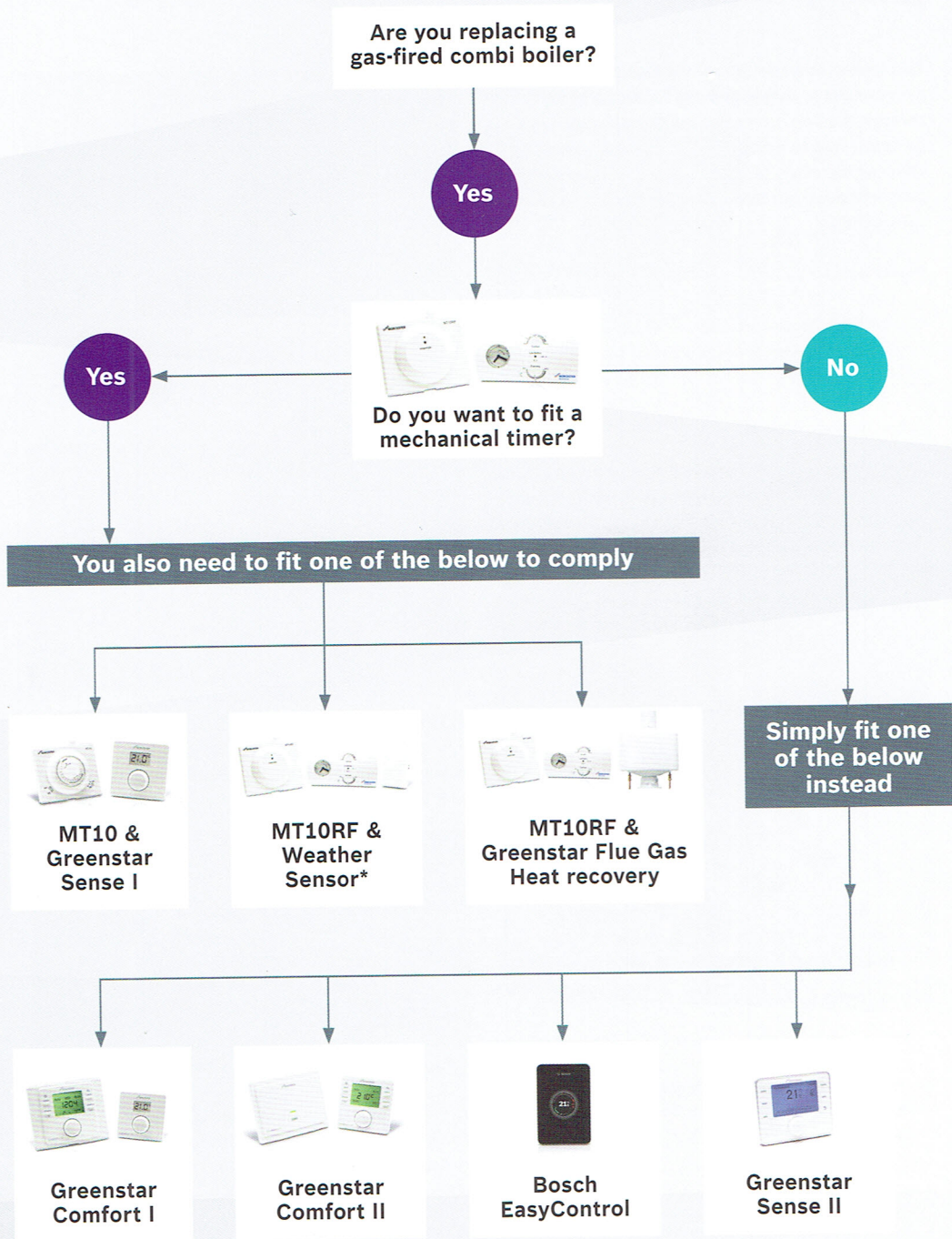


Boiler Plus legislation made easy with Worcester

Mandatory in England from April 2018



*Weather Sensor not compatible with the Greenstar CDI Classic.

Boiler Plus

By now, you'll likely be familiar with Boiler Plus and the changes the new legislation entails. With the need to fit at least one of four energy saving measures with any replacement gas-fired combi boiler from April 2018, it's important to know how you can offer homeowners the most out of these additional system requirements.

Your options

While the new legislation requires the need for at least one of these additional measures (load compensation, weather compensation, a flue gas heat recovery unit, or smart thermostat with automation and optimisation) there is nothing to stop you from incorporating a number of these measures into a customer's heating system. In fact, the idea of installing multiple efficiency features will only help to further boost the efficiency – and cost saving potential – of the heating system.

A smart pairing

Non-internet connected controls generally tend to be singular in their function and will feature either only a weather sensor or a load compensator. However if we take a look at smart controls on the other hand, many of them – particularly ones developed by boiler manufacturers – feature automation and optimisation as well as weather and load compensation too, meeting three of the items on the checklist and offering homeowners the best return on their investment.

The Bosch EasyControl solution

Our new Bosch EasyControl enables installers to offer customers a simple solution to meet the requirements of Boiler Plus. It not only meets the time and temperature requirements outlined in the Boiler Plus standard, it also meets three of the four additional energy-saving measures listed (weather compensation, load compensation while being a smart thermostat).

To further enhance your customers' heating system, the new smart control can also be paired with devices such as our Smart TRVs. Please see page 10 for more details on our Smart TRVs.

While the changes that Boiler Plus promotes may take some getting used to initially, they also bring about a number of opportunities for installers to add real value in their consultation with the homeowner. Some of the possible options won't be practical for certain installations, while others will see a nominal up-front cost, rewarded with long-term energy savings.

Let us know your thoughts on the Boiler Plus policy by visiting our social channels.

Boiler Plus - At a Glance:

From April 2018 all replacement gas-fired combi boilers must:

- Have a minimum efficiency of 92% ErP.

Each installation will then need to include working time and temperature controls (if not already present), in addition to at least one of the following four options:

- Load compensation
- Weather compensation
- Flue gas heat recovery unit
- Smart thermostat with automation and optimisation



@WorcesterBosch



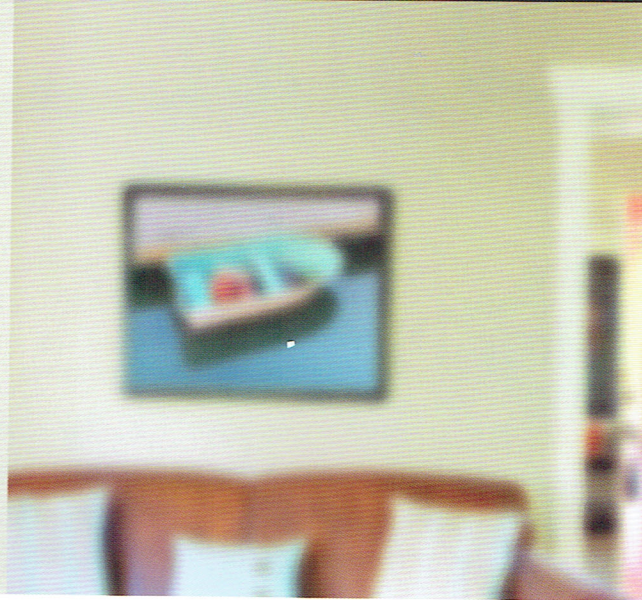
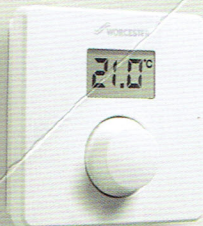
WorcesterBoschGroup



WorcesterBoschProfessional



WorcesterBoschProfessional



Boiler Plus

The Different Ways to Comply

With Boiler Plus offering four separate options, flexibility is there to cater for a variety of situations. Some people may want a smart thermostat, while others prefer the simplicity of a straightforward dial - the key is understanding the best option for each scenario.

We have compiled a few different product options, which are alternatives to smart controls and still meet the Boiler Plus requirements with ease.

Economical option

Not every customer will want to invest in an internet-connected smart controls alongside their replacement boiler installation. This could be for a number of reasons, but whatever the case you can still confidently recommend an alternative solution. In fact, one of the most economical options to comply with the Boiler Plus legislation is to specify a Worcester Greenstar Sense I Intelligent Room Thermostat, alongside either a Worcester MT10 mechanical timer.

A mechanical timer is beneficial for those who are used to manually setting the heating with a start and finish time

every day. The MT10 is set using the 'teeth' on the dial.

A Greenstar Comfort I or Comfort II device will provide time and temperature control along with load compensation.

Improve, don't remove

If you have a customer who wishes to retain their existing time and temperature control and just wants to change the boiler, adding a weather sensor is an easy way to comply.

Another option is to keep the old controls and then simply change the thermostat to a Worcester Greenstar Sense I Intelligent Room Thermostat.

You can find out more about our range of energy efficient controls and accessories by visiting worcesterbosch.co.uk/professional

Other ways to comply with controls - At a glance

- Choose any award-winning Greenstar combi boiler
- Fit a Greenstar Comfort I, Comfort II, Sense or Bosch Easy control

You can also fit the following with any Greenstar combi boiler and comply:

- Worcester MT10 mechanical timer and Greenstar Sense I
- Worcester MT10 RF and Weather Sensor